

1623 CORTE VIA LOS ALTOS  
TWO STORY RESIDENCE WITH ACCESSORY UNIT

2,662 Total Square Feet

7,500 SF Site

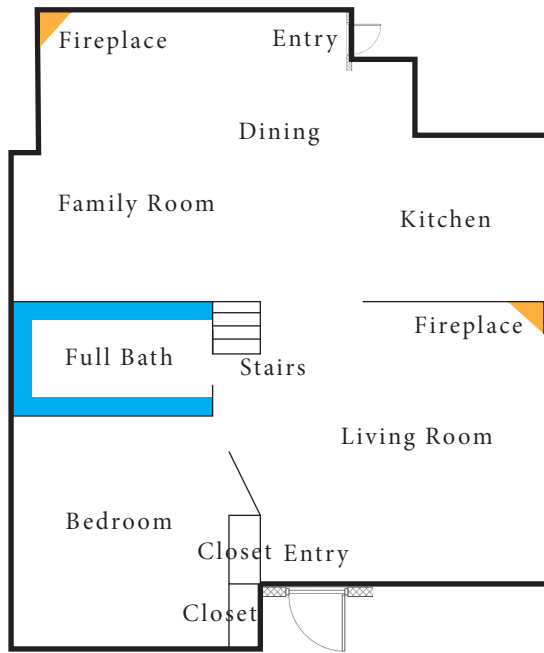
Main Home re-built in 1995

4 Bedrooms

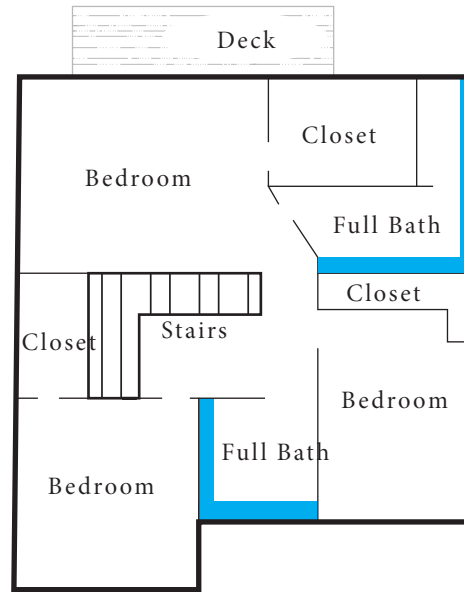
3 Bathrooms

Accessory Unit

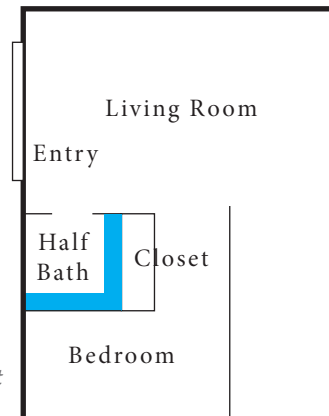
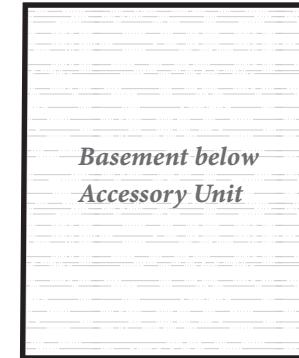
2 Fireplaces



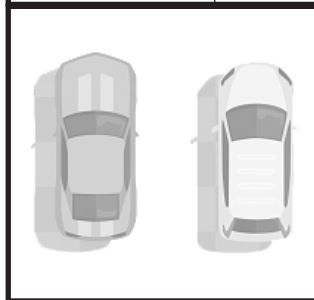
*First Level*



*Second Level*



*Detached Accessory Unit*



*Two Car Garage*

DaVinci by a la mode, inc.		<b>Area Calculations Summary</b>	
<b>Living Area</b>		<b>Calculation Details</b>	
Residence	1251.1 Sq ft	$16.25 \times 4 = 65$ $20.25 \times 3.25 = 65.8125$ $24.25 \times 5 = 121.25$ $28.25 \times 2 = 56.5$ $29 \times 32.25 = 935.25$ $0.5 \times 29 \times 0.5 = 7.25$	
Undefined Area	918 Sq ft	$30 \times 29 = 870$ $4 \times 12 = 48$	
Open to Below	-47.3 Sq ft	$3 \times 3.75 = 11.25$ $3 \times 12 = 36$	
Undefined Area	540 Sq ft	$27 \times 20 = 540$	
<b>Total Living Area (Rounded):</b>	<b>2662 Sq ft</b>		
<b>Non-living Area</b>			
2 Car Detached Garage	400 Sq ft	$20 \times 20 = 400$	
Basement	482.8 Sq ft	$25.75 \times 18.75 = 482.8125$	